



Waste Discharge License 178-4 Annual Return 2015

Vista Gold Australia Pty Ltd

Mount Todd Gold Project



Contents

| | |
|--|----|
| Amendments..... | 3 |
| 1 Operator Details..... | 3 |
| 1.1 Organisational Chart | 4 |
| 2 Compliance with Licence Conditions | 5 |
| 3 Summaries..... | 17 |
| 3.1 Complaints Recording..... | 17 |
| 3.2 Notifications of potential or actual environmental harm or pollution | 17 |
| 4 Signature and Certification | 18 |

1 Operator Details

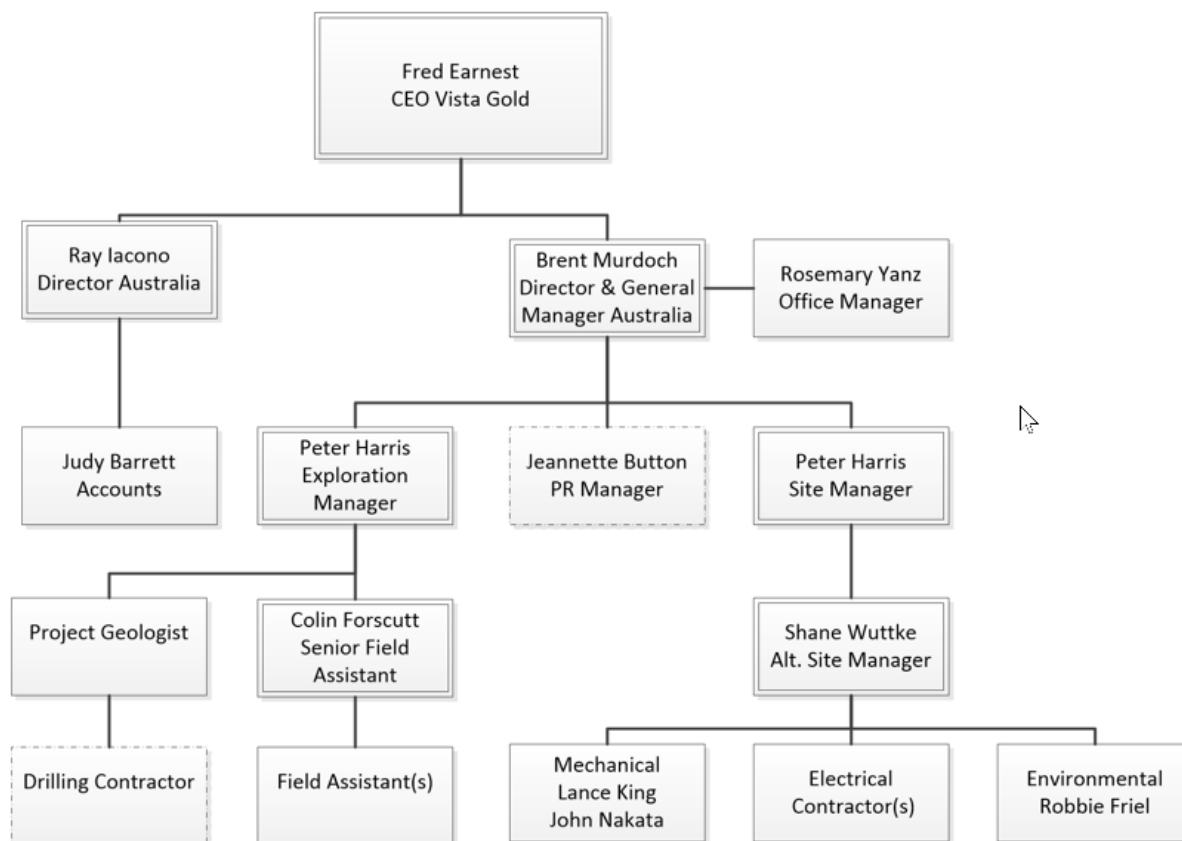
Table 1 – Operating Details

| | |
|------------------------------|--|
| Operator Name: | Vista Gold Australia Pty Ltd |
| Key Contact Person/s: | Brent Murdoch, Project Manager / Director Peter Harris, Exploration Manager / Site Manager |
| Postal Address: | Brent Murdoch, Project Manager / Director |
| Street Address: | Brent Murdoch, Project Manager / Director Street address: 43 Cavanagh St, Darwin NT 0800 Peter Harris, Exploration Manager Street address: Edith Falls Road, Katherine NT 0850 |
| Phone: | Brent Murdoch, Project Manager / Director 0488 100 314 Peter Harris, Exploration / Site Manager 08 8988 9763 Ray Iacono, Director 02 9560 1110 |
| Fax: | (08) 8975 4302 Site (02) 89419108 Head Office |
| Email: | pharris@mttodd.com.au riacono@vistagoldaustralia.com.au ffenne@VISTAGOLD.COM |

1.1 Organisational Chart

Vista Gold Australia Pty Ltd is wholly owned subsidiary of Vista Gold Corporation. The organisational structure of Vista Gold Australia's exploration department is represented in the figure below

Figure 1- Structure of Vista Gold Australia Exploration Department



2 Compliance with Licence Conditions

| Condition | Action | Compliance | Evidence | When (Date) | Status |
|--------------------|--|------------|--|---|-----------|
| OPERATIONAL | | | | | |
| 1 | The Licensee must notify the NT EPA within 24 hours if there are changes to the details of the 24-hour emergency contact as provided on page one of this Licence. | Yes | No changes to emergency contact details | N/A | Unchanged |
| 2 | The Licensee must notify the NT EPA within 14 days if there are changes to the Licensee details shown on page one of this Licence. | Yes | No changes to licence details | N/A | Unchanged |
| 3 | The Licensee must notify the NT EPA within 14 days after ceasing to conduct the activity to which this Licence relates. | Yes | Notifications of discharge cessation provided by email to pollution@nt.gov.au on the dates specified. | 12/1/2015 22/1/2015 3/2/2015 10/3/2015 1/4/2015 | Complete |
| 4 | The Licensee must notify the NT EPA prior to making any operational change that will cause, or is likely to cause, an increase in the potential for environmental harm, environmental nuisance, material environmental harm or serious environmental harm. | Yes | No operational changes were made that had the potential to increase the potential for environmental harm , environmental nuisance, material environmental harm or serious environmental harm | N/A | Unchanged |

| | | | | | |
|--------------------|--|-----|--|---|-----------|
| 5 | The Licensee must ensure a copy of this Licence is available at all times: | | | | |
| | 5.1 on the Licensee's Australian website; and | Yes | URL to licence is http://www.mttodd.com.au/sites/default/files/files/WDL178-Vista-Gold-Mount-Todd-Gold-Mine.pdf | 1/1/2015 | Complete |
| | 5.2 at the Location. | Yes | Copy of the licence available at the Site Office | 1/1/2015 | Complete |
| 6 | Where this Licence requires the provision of any notice, document or other correspondence to the NT EPA, the relevant contact is: Pollution Control, NT EPA. Physical Address: Level 2 Darwin Plaza, 41 Smith Street Mall, Darwin NT 0800 Postal Address: GPO Box 3675, Darwin NT 0801 Email: pollution@nt.gov.au | Yes | All documents, correspondence and communications conducted via the specified addresses | Various - Throughout the term of the licence | Unchanged |
| 7 | All notices, documents or other correspondence required to be provided pursuant to this Licence must be provided in electronic form unless otherwise specified as a condition of this Licence. | Yes | All documents provided in electronic format | Various - Throughout the term of the licence | Unchanged |
| 8 | The Licensee must, on request, provide to the NT EPA any data relevant to this Licence, in such a form and after any interpretative analysis as requested by the NT EPA | Yes | All documents provided if requested | Various - Throughout the term of the licence | Unchanged |
| OPERATIONAL | | | | | |

| | | | | | |
|----|---|-----|--|------------|-----------|
| 9 | <p>The Licensee must, without limiting any other condition of this Licence in conducting the Activity do all things reasonable and practicable to ensure the Activity does not adversely affect the Declared Beneficial Uses and Objectives as declared from time to time, including those applying to:</p> <ul style="list-style-type: none"> • Edith River Surface Water | Yes | All post discharge monitoring has not detected any adverse impacts to the declared beneficial uses. No evidence has been provided to the Licensee from any third party indicating otherwise. | 01/06/2015 | Unchanged |
| 10 | The Licensee must maintain and implement a Communication Plan which includes a strategy for communicating with members of the public who are likely to have a real interest in or be affected by the Activity. | Yes | Communication plan has been developed. No unexpected events or emergencies have occurred during the term of the licence which required public communication as per the communication plan | 26/11/2013 | Unchanged |
| 11 | The Licensee must ensure a copy of the Communication Plan is available on the Licensee's Australian internet website. | Yes | Document on website URL: http://www.mttodd.com.au/waste-discharge-licence.html | 1/1/2015 | Unchanged |
| 12 | The Licensee must maintain a log of each complaint, made in relation to the Activity, to any persons involved in the Activity. The log must include details of the following: | Yes | Complaint register maintained on site. No complaints were received during the licence period. | N/A | Unchanged |
| | 12.1 the date and time of the complaint; | | N/A | | |
| | 12.2 the contact details of the complainant if known, or where no details are provided, a note to that effect; | | N/A | | |
| | 12.3 the nature of the complaint; | | N/A | | |
| | 12.4 the nature of events giving rise to the complaint; | | N/A | | |

| | | | | | |
|---------------------------------|--|-----|--|--|-----------|
| | 12.5 prevailing weather conditions at the time of the complaint; | | N/A | | |
| | 12.6 the action taken in relation to the complaint, including any follow-up contact with the complainant; and | | N/A | | |
| | 12.7 if no action was taken, why no action was taken. | | N/A | | |
| 13 | The Licensee must implement and comply with the Vista Gold Australia Pty Ltd Discharge Plan Revision 3, dated December 2014 (the Discharge Plan) as provided to the NT EPA | Yes | All actions of the discharge plan were complied with | Various - Throughout the term of the licence | Unchanged |
| 14 | The Licensee must submit any proposed revision of the Discharge Plan (other than typographical changes or revisions to formatting or referencing) to the NT EPA | Yes | No revisions during the reporting period | 1/7/2015 | Complete |
| 15 | If there is any discrepancy between the Discharge Plan and this Licence, this Licence takes precedence. | Yes | Noted | 1/1/2015 | Complete |
| 16 | The NT EPA may, by notice in writing, require the Licensee to revise, amend and/or resubmit any report or plan required to be submitted under this Licence. Any report or plan including revision amendment or resubmission of the report or plan is not effective until accepted by the NT EPA. | Yes | Noted | 1/7/2015 | Complete |
| DISCHARGES AND EMISSIONS | | | | | |
| 17 | This Licence authorises waste water to be discharged from the authorised discharge points identified in table 1. | Yes | Only discharge during licence period was from RP3 via Authorised Discharge Point CSE | 01/07/2015 | Complete |

| | | | | | |
|----|---|-----|--|------------------------------------|----------|
| 18 | The Licensee must not discharge waste water to the Edith River from Retention Pond RP1 and/or Retention Pond RP7 unless there is imminent danger of waste water overtopping the retention pond walls: | Yes | No discharge from either location | 1/7/2015 | Complete |
| | 18.1 as a result of abnormal rainfall intensity or duration that has reduced storage capacity to a level predicted to be insufficient to contain site water; | | N/A | | |
| | 18.2 all actions in accordance with the Discharge Plan to minimise the need to discharge have been undertaken to the satisfaction of the NT EPA; and | | N/A | | |
| | 18.3 the Licensee has received written approval (can be email) for discharge from RP1 and/or RP7 from the NT EPA. | | N/A | | |
| 19 | Prior to any discharge from RP3, the Licensee must determine the dilution required to achieve the water quality objectives defined in condition 21. The dilution must be determined: | Yes | Dilution ratio determined prior to discharge | 1/1/2015 | Complete |
| | 19.1 in accordance with the Vista Gold Dilution Algorithm, based on chemistry of the water to be discharged from RP3 as specified in the Discharge plan; or | Yes | Dilution ratio of 1:22 determined by Algorithm using RP3 water chemistry prior to discharge | 1/1/2015 | Complete |
| | 19.2 as directed by the NT EPA | Yes | No direction received | 1/7/2015 | Complete |
| 20 | The Licensee must as soon as practicable notify the NT EPA by email to pollution@nt.gov.au prior to commencing a discharge to the Edith River. | Yes | Notifications of discharge cessation provided by email to pollution@nt.gov.au on the dates specified. | 2/1/2015 14/1/2015 26/1/2015 | Complete |

| | | | | | |
|----|--|-----|---|------------------------|----------|
| | | | | 21/2/2015 25/3/2015 | |
| 21 | The water quality objectives to be met at monitoring site SW4 for this licence period are: | | | | |
| | 21.1 for aquatic ecosystem toxicants, maintenance of 80% level of species protection; and | Yes | Met in accordance with Discharge plan SSTVs | 1/7/2015 | Complete |
| | 21.2 protection of water suitable for stock | Yes | Met in accordance with Discharge plan SSTVs | 1/7/2015 | Complete |
| 22 | Waste water monitoring locations are defined in Table 2 and Appendix 1. | Yes | Reflected in monitoring program | 1/1/2015 | Complete |
| 23 | The Licensee must apply site specific trigger values (SSTVs) specified in Appendix 3 at sampling location SW4 and must ensure: | Yes | Sampling at SW4 during discharge compared to SSSTVs | 1/1/2015 | Complete |
| | 23.1 water quality parameters measured at SW4 do not exceed greater or equal to two times the SSTV for any single measurement; and | Yes | No value exceeded two times SSTV for any parameter – see WDL report | 1/7/2015 | Complete |
| | 23.2 the rolling seven day 80 th percentile of measurements for each water quality parameter does not exceed the SSTV. | Yes | No parameter with consecutive exceedances triggering rolling 80 th percentile calculation – see WDL report | 1/7/2015 | Complete |
| 24 | When water quality at monitoring point SW4 does not comply with condition 23.1 the Licensee must: | Yes | Complied with condition 23.1 | 1/7/2015 | Complete |
| | 24.1 cease discharge of waste water; and | | N/A | | |
| | 24.2 implement the Vista Gold investigation process defined in Appendix 4. | | N/A | | |

| | | | | | |
|----|---|-----|---|----------|----------|
| 25 | When water quality at monitoring point SW4 does not comply with condition 23.2 the Licensee must: | | Complied with condition 23.1 and 23.1 | 1/7/2015 | Complete |
| | 25.1 increase dilution of the waste water; and | | N/A | | |
| | 25.2 implement the Vista Gold investigation process defined in Appendix 4. | | N/A | | |
| 26 | Waste water at the monitoring point SW4 and the Edith River downstream of the mine site discharge must not: | Yes | Discharged waters over the reporting period did not contain or generate any of the specified items | 1/7/2015 | Complete |
| | 26.1 contain any visible matter, floating oil and grease or petroleum hydrocarbon sheen or scum, or litter or other objectionable matter; | Yes | Never observed | 1/8/2015 | Complete |
| | 26.2 cause or generate odours which would adversely affect the use of surrounding waters; | Yes | Never observed | 1/8/2015 | Complete |
| | 26.3 cause algal blooms; | Yes | Never observed | 1/8/2015 | Complete |
| | 26.4 cause visible change in the behaviour of fish or other aquatic organisms; | Yes | Never observed | 1/8/2015 | Complete |
| | 26.5 cause mortality of fish or other aquatic organisms; | Yes | Never observed | 1/8/2015 | Complete |
| | 26.6 cause adverse impacts on plants: and | Yes | Never observed | 1/8/2015 | Complete |
| | 26.7 cause adverse impacts to drinking water | Yes | The Edith river is not a known source of direct drinking water for any downstream consumers, and there is no evidence of any indirect effects on alternative drinking water supplies. | 1/8/2015 | Complete |

| | | | | | |
|-------------------|--|-----|---|----------|----------|
| 27 | At any time the NT EPA may direct the Licensee to cease discharge from a waste water source and the Licensee must: | Yes | No directions were received from the NT EPA to cease discharge during the licence period. | 1/7/2015 | Complete |
| | 27.1 immediately comply with the NT EPA direction to cease discharge; and | | N/A | | |
| | 27.2 comply with any further direction of the NT EPA. | | N/A | | |
| MONITORING | | | | | |
| 28 | The licensee must for all monitoring points listed in Table 2: | | | 1/1/2015 | Complete |
| | 28.1 install, maintain and provide appropriate identification signage so that they are easily identifiable at all times; and | Yes | All monitoring locations are clearly signed and easily accessible | 1/8/2015 | Complete |
| | 28.2 maintain safe access and egress, as is reasonably practicable. | Yes | Existing tracks maintained throughout the year | 1/8/2015 | Complete |
| 29 | Water quality sampling and collection of field environmental data must be carried out in accordance with the sampling schedule prescribed in Appendix 2. | Yes | The respective monthly monitoring reports and annual WDL report evidence the monitoring undertaken in compliance with Appendix 1 | 1/7/2015 | Complete |
| 30 | The licensee must ensure that all water samples and field environmental data are representative of the conditions at the time of sampling and are collected in accordance with recognised Australian Standards and guidelines (e.g. AS/NZS 5667, ANZECC/ARMCANZ) | Yes | Water samples and field data is collected in accordance with recognised Australian standards as identified in the Discharge plan and water management plan on the Vista website. URL: http://www.mttodd.com.au/waste-discharge-licence.html | 1/7/2015 | Complete |
| 31 | The Licensee must ensure that all water samples used for reporting are analysed by a laboratory with current | Yes | Laboratory used is NATA accredited. Certificate available at following URL: | 1/7/2015 | Complete |

| | | | | | |
|----|---|-----|---|-----------|----------|
| | N.A.T.A certification for the analysis specified (or equivalent quality control). | | http://www.nata.com.au/nata/scopeinfo/?key=2894&searchword=&ordering=Alphabetical&match=exact&accredit_no=2901&field=All&state=Select+State&postcode= | | |
| 32 | For each sample required to be collected by this Licence, the following information must be recorded and retained: | Yes | All details as specified were recorded and are present as original field sheets or electronic data | 1/7/2015 | Complete |
| | 32.1 the date(s) on which the sample was taken; | Yes | Contained on all field sheets | | Complete |
| | 32.2 the time(s) at which the sample was collected; | Yes | Contained on all field sheets | | Complete |
| | 32.3 the point(s) at which the sample was taken; | Yes | Contained on all field sheets | | Complete |
| | 32.4 the name of the person who collected the sample; | Yes | Contained on all field sheets | | Complete |
| | 32.5 the chain of custody forms relating to the sample(s); | Yes | Electronically retained | | Complete |
| | 32.6 the field measurements and/or analytical results for the sample; and | Yes | Contained on all field sheets | | Complete |
| | 32.7 laboratory QA/QC documentation. | Yes | Electronically retained | | Complete |
| 33 | The Licensee must prepare and submit a monitoring plan to the NT EPA by 31 March 2015. The monitoring plan must: | Yes | Monitoring plan submitted | 17/4/2015 | Complete |
| | 33.1 describe the methods used to measure the likely impact(s) of changes in water quality, sediment quality, biota quality and aquatic ecology in the Edith River over timeframes and spatial scales relevant to the | Yes | Provided as part of the monitoring plan | 17/4/2015 | Complete |

| | | | | | |
|--------------------------------|--|-----|---|----------|----------|
| | waste water discharges from the Mount Todd mine site; and | | | | |
| | 33.2 consider comments provide by the NT EPA | Yes | No comments were received | 1/8/2015 | Complete |
| RECORDING AND REPORTING | | | | | |
| 34 | All records required to be kept by this Licence must be in a legible format. | Yes | All records are legible | 1/8/2015 | Complete |
| 35 | The Licensee must keep records of all non-compliances with conditions of this Licence. | Yes | All non-compliances are noted at the relevant condition in this AR | 1/8/2015 | Complete |
| 36 | The Licensee must as soon as practicable, and in any case within 24 hours, notify the NT EPA of non-compliances with conditions of this Licence by emailing pollution@nt.gov.au . | Yes | No notifications of non compliance have been issued over the reporting period as no conditions of the licence have been breached. | 1/8/2015 | Complete |
| 37 | Non-compliance notifications required under condition 36 must identify: | Yes | No non compliances | 1/8/2015 | Complete |
| | 37.1 circumstances leading up to the non-compliance; | | N/A | | |
| | 37.2 the risk to the environment from the non-compliance; | | N/A | | |
| | 37.3 what actions the Licensee will undertake to mitigate any environmental harm resulting from the non-compliance; and | | N/A | | |

| | | | | | |
|----|---|-----|---|----------|----------|
| | 37.4 what corrective actions the Licensee will undertake to ensure the non-compliance does not occur again. | | N/A | | |
| 38 | The Licensee must immediately and in any case within 24 hours notify the NT EPA of any potential or actual environmental harm or pollution by contacting the Pollution Hotline on telephone number 1800 064 567 and emailing pollution@nt.gov.au | Yes | No notifications required as no potential or actual harm during reporting period | 1/7/2015 | Complete |
| 39 | The Licensee must submit a Monitoring Report to the NT EPA by 31 August for each year of the Licence. The Monitoring Report must: | Yes | WDL Monitoring Report submitted with annual return | 1/8/2015 | Complete |
| | 39.1 be prepared in accordance with requirements for a Monitoring Report as per NT EPA <i>Guidelines for Consultant Reporting on Environmental Issues</i> ; | Yes | Note that QA/QC and laboratory results have not been included in the monitoring report due to the quantity of data. This information can be made available electronically upon request. | 1/8/2015 | |
| | 39.2 include a tabulation of all monitoring data required as a condition of this Licence, including surface water, discharge, sediment and biological monitoring; | Yes | WDL Monitoring Report submitted all water quality data. Sediments and macroinvertebrates covered in Appendix | 1/8/2015 | Complete |
| | 39.3 include a trend analysis and interpretation of all monitoring data required as a condition of this Licence; | Yes | Included in monitoring report | 1/8/2015 | Complete |
| | 39.4 include long term trend analysis to demonstrate any environmental impact associated with the Activity over a minimum period of four years; and | Yes | Trend analysis of Macroinvertebrate data in respective report | 1/8/2015 | Complete |
| | 39.5 contain a summary of the discharge events that exceeded the SSTVs during the reporting period. | Yes | No exceedances related to discharges. All data included in WDL Monitoring report | 1/8/2015 | Complete |

| | | | | | |
|---|---|-----|---|----------|----------|
| 40 | The Licensee must complete the Annual Return supplied at Appendix 5 and provide it to the NT EPA by 31 August for each year of the Licence | Yes | Current document submitted with WDL Monitoring Report prior to 31 August | 1/8/2015 | Complete |
| VERIFICATION OF THE DILUTION ALGORITHM | | | | | |
| 41 | The Licensee must verify the dilution predicted by the Dilution Algorithm. Verification of the Dilution Algorithm must: | Yes | Verification report submitted early April to NT EPA | 2/4/2015 | Complete |
| | 41.1 be carried out in accordance with the Discharge Plan; and | Yes | All activities undertaken as specified | 1/8/2015 | Complete |
| | 41.2 consider comments provide by the NT EPA | Yes | No comments received | 1/8/2015 | Complete |
| 42 | The Licensee must provide a report to the NT EPA on results of verifying the Dilution Algorithm within 10 business days of receiving laboratory results | Yes | Request for extension of 10 days approved by NTEPA on 17 March 2015. Report was submitted on 2 April to NT EPA, one day after due date. | 2/4/2015 | Complete |
| END OF LICENCE CONDITIONS | | | | | |

3 Summaries

3.1 Complaints Recording

| | |
|---|----|
| Number of complaints recorded by the Licensee during the reporting period | 0 |
| Summary of complaints | NA |
| Summary of outcomes | NA |

3.2 Notifications of potential or actual environmental harm or pollution

| | |
|--|---|
| Number of events recorded by the licensee during the reporting period (as required by condition 37 of the licence) | 0 |
| Summary of events | |
| Summary of outcomes | |

4 Signature and Certification

This declaration must only be signed by a person(s) with the legal authority to sign it. The ways in which the declaration may be signed, and the people who may sign the application, are set out in the categories below.

| If the Licensee is: | Tick | The declaration must be signed and certified by one of the following: |
|---------------------|------|---|
| An individual | | The individual |
| A company | | The common seal being affixed in accordance with the Corporations Act , or |
| | ✓ | Two directors, or |
| | | A director and a company secretary, or |
| | | If a proprietary company that has a sole director who is also the sole company secretary- by that director |
| A public authority | | The Chief Executive Officer (CEO) of the public authority, or |
| | | By a person delegated to sign on the public authority's behalf in accordance with its legislation (Please note: a copy of the relevant instrument of delegation must be attached to this report). |

I/We hereby declare that the information provided in this Annual Audit and Compliance Report and accompanying documents is to the best of my/our knowledge, true and correct.

| | | | |
|-------------------------------|---|-----------------------|---|
| Signature |  | Signature |  |
| Name (printed) | Brent Murdoch | Raymond Iacono | |
| Position | Director and General Manager | Director | |
| Date | 20 Aug-15 | 09 Sep-15 | |
| Seal (if signing under seal): | N/A | | |

